

## Specification and Additional Condition For Twin Bin for Commercial Area

Category Name	Specification	Title	Bid Requirement (Allowed Values)
Waste Containers Or Rigid Liners- Dust Bin Or Garbage Bin Or Household Bin-IS 12402	GENERIC	Utility	Domestic
		ISI Marked	Yes
		CM/L No (If ISI Marked Yes) (If No write NA)	Yes
		Class confirming to IS:12402 (For Public Dustbins)	NA
		Material	LLDPE
	CAPACITY	Bin Capacity (Volume) (Ltrs)	100 Litres
	DIMENSIONS	Wheel Dimension in (mm) (Diameter x Thickness ) (mm x mm)	NA
		Weight of Dustbin (Complete unit) (Grams)	10000
	CONSTRUCTIONAL	Colour	Green and Blue
		Wheel Lock	Without
		Load carrying Capacity (Kgs)	100
		Wall	Non- Perforated
		Lid	Removable
		Handle	Without
		Wheel	Without
		Wheel Material	NA
		Towage Provision	No
		Gripping Provision	NA
		Plugged outlet for washing & draining	Without
		UV Resistant	Yes
		Dust Bin stand	With
		No. of Compartments in the Bin	Twin Bin
	CERTIFICATIONS	Availability of Test Reports from Central Government/NABL/IL AC a credited Lab to prove conformity to the specifications	Yes

		Test report number	As per Certificate
		Test report date	As per certificate
		Name and address of lab	As per certificate

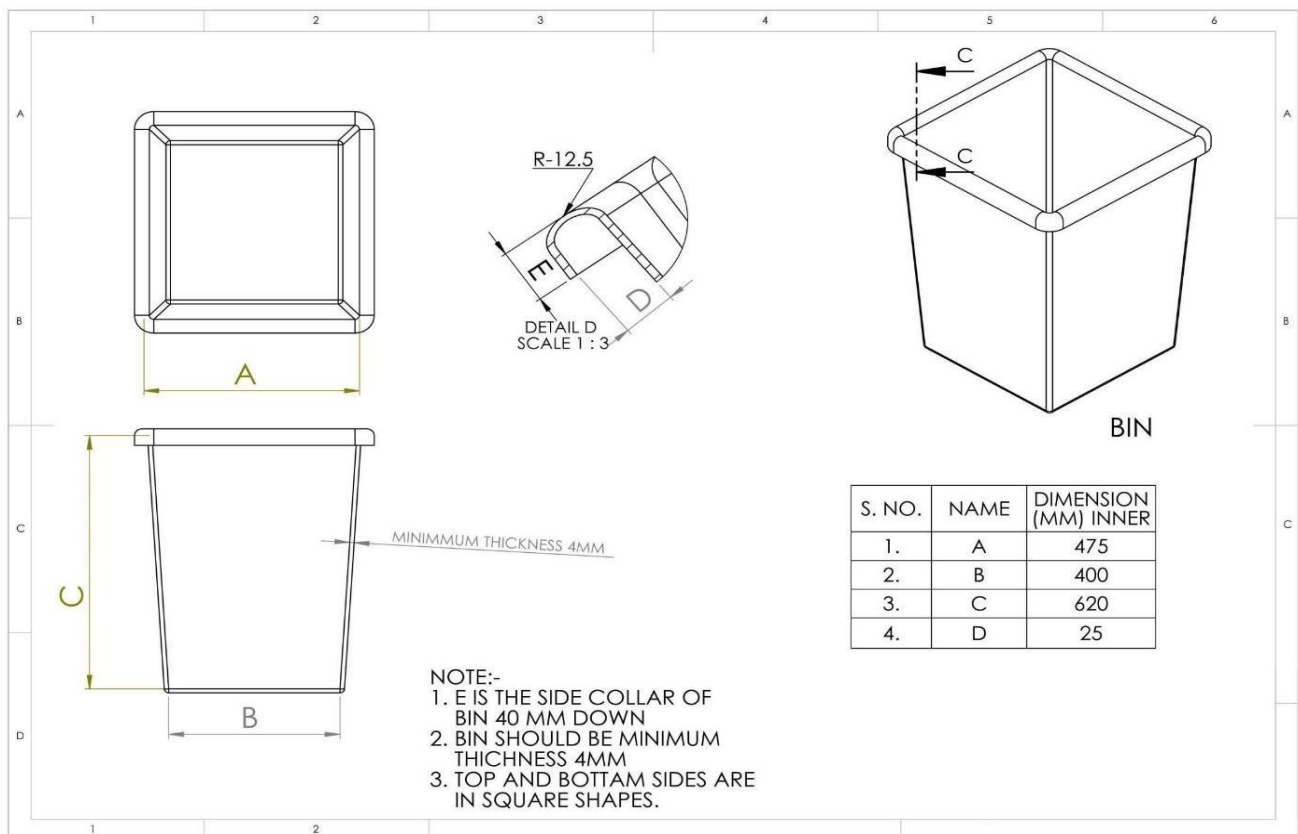
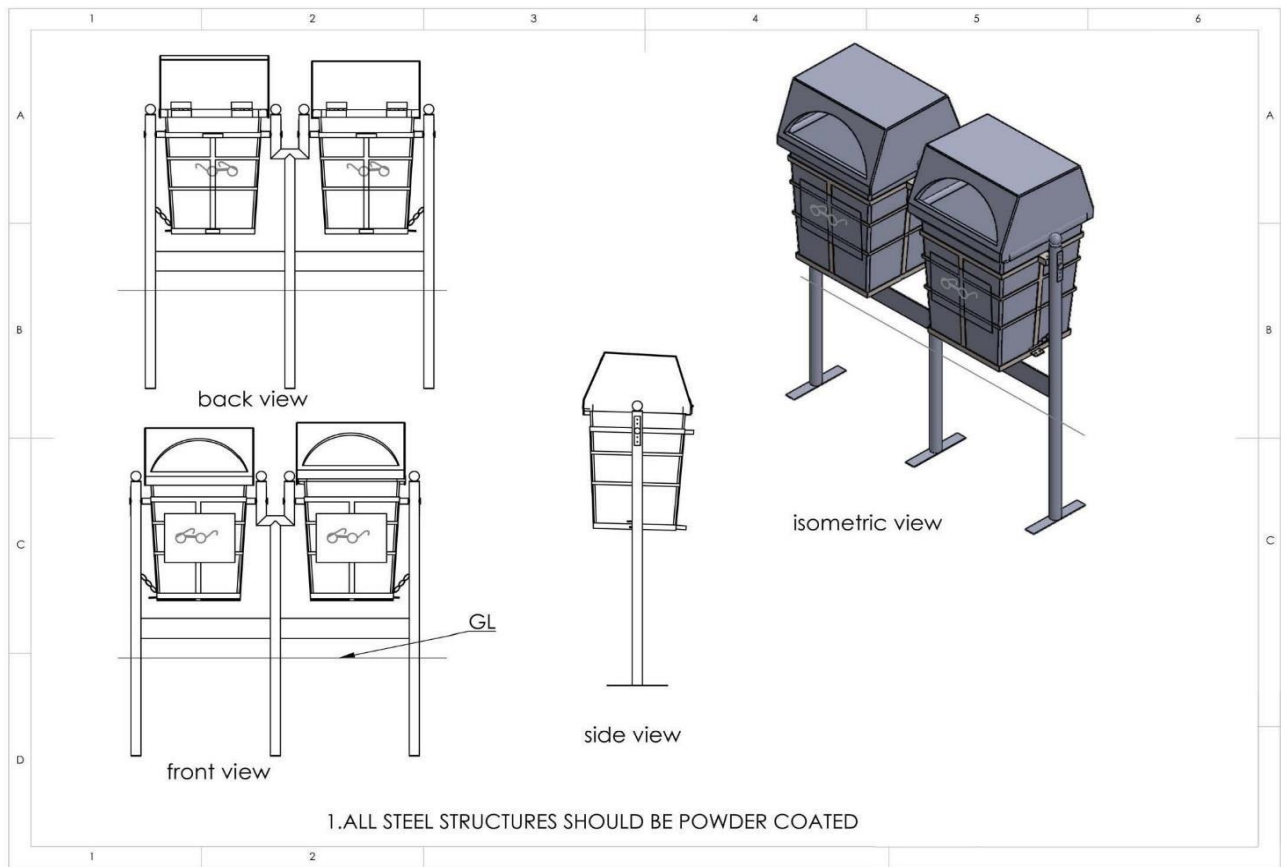
### **Additional Terms and conditions / Specification For Twin Bin for Commercial Area**

1. The Garbage Bin body shall be designed in such a way to give strength in each side and bottom of the container. The design of the Garbage Bin should be such that it should stand erect and stable on ground without stand. The Garbage Bin body shall be verticality symmetrical (10 % inward tapering) from top end to bottom end.
2. Collar of Garbage Bin should be designed in U shape having curve radius 12.5 mm and at least 25mm height as per drawing.
3. Garbage Bin lid should have opening in from side for putting the garbage. The lid shall have a semicircle opening for rectangular Garbage Bin with height of 200 mm and also have at least 25 mm rib around the opening of lid to prevent the garbage spill over.
4. Lid and container of Garbage Bin should be fixed with heavy hinge made of steel (strip 40 mm wide and minimum 2 mm thick sheet) with suitable riveting and screw arrangements as shown in the drawing. The lid should have 40 mm height border around three sides & the forth side (back side) to be fixed with hinges.
5. The LLDPE Garbage Bin should be mounted on a steel cage fitted into two steel stand posts with bushes to enable rotational motion of Garbage Bin as per detailed drawing shown for removal of garbage and cleaning and also for easy handling.
6. Length of stand post for bin above the ground shall be 900 mm for 100 liters, except top round cap and 500 mm below the ground for erection in the concrete properly with marking on the stand posts to indicate the ground level.
7. Stand post should be made from heavy duty black pipe conforming to IS standards of 50 mm NB for 100 liters bin with suitable made of MS plate of size 300 X50X5 mm at the bottom of the stand post for grouting.
8. The steel cage should have locking system with the stand post.
9. Between the stand post, a cross plate of size 50x5 mm duly welded for support and each to be stably fixed at 100 mm above from the ground. The length of support plate should be equal to distance between stand posts as per drawing.
10. The minimum thickness of LLDPE Garbage Bin container and lid shall be 4mm for 100 liters.
11. The steel cage ( as per drawing ) shall be manufactured from flat strip of minimum size 15x3 mm. The top and bottom ring of steel cage shall have strip of minimum size 25x3 mm and also provided with two handles at top and bottom ring at the center on backside having the strip of 15x3 mm with length of 125 mm& height of 50 mm.
12. The LLDPE Garbage Bin container should be properly riveted with the steel cage with 8 Nos. rivets on the ring top i.e. two nos. at each side for double bins and similarly 4 nos. for single bin.
13. The steel cage shall be made as per drawing and properly riveted.
14. All the steel components i.e. stand posts, cage and other fixtures shall be powder coated with green/blue color as per the requirement of the indenter with minimum thickness of coating of 100 micron at any place.
15. The height of the Garbage Bin on structure should be such that the user can push in the garbage at a maximum height of 4 feet.
16. The Dimensions of the container of Garbage Bin of 100 liter capacity is as under:

Capacity (Liters)	Top side (mm)	Bottom side (mm)	Height (mm)
100 (rectangular)	475 (Square)	400 (Square)	620

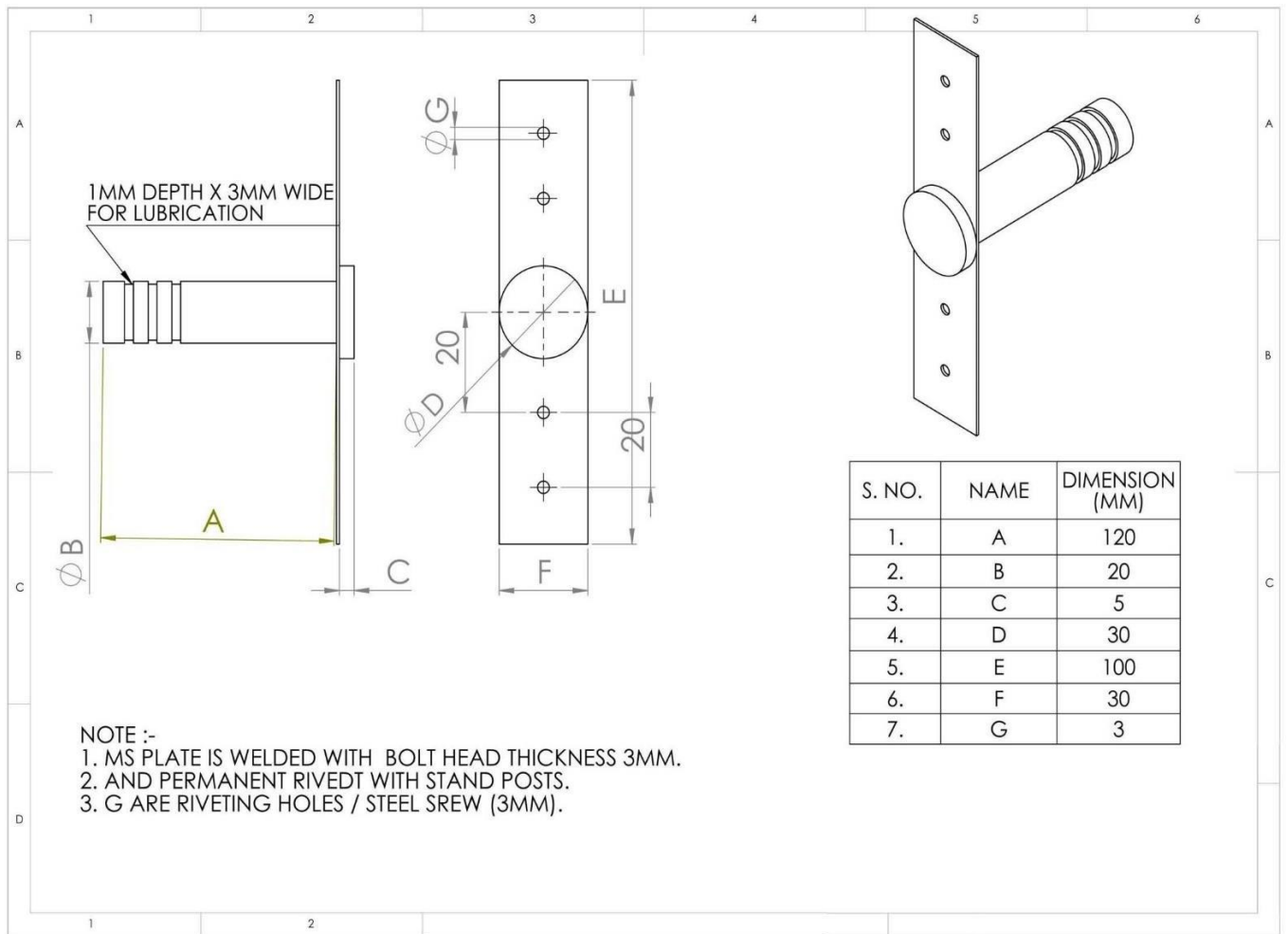
17. The variation in Length, width and Depth of container of Garbage Bin shall be +/- 5 % under the condition that its capacity should not be less than the required limit and function properly.
18. The logo of Dhrol Nagarpalika shall also be printed as per instructed by Dhrol Nagarpalika Officials on the display plate which is 1 mm thick MS plate of minimum size 350x250 mm fixed on steel cage properly riveted as per design.
19. LLDPE Garbage Bin container and lid shall be made from only virgin material and no recycled contents shall be used for manufacturing of the LLDPE Garbage Bin container and lid.
20. Ash content of the LLDPE shall not be more than 1% when tested as per method as described in Annex D of IS 14887/2014.
21. The color of the LLDPE garbage Bin container & lid shall be green and/ or blue for biodegradable and non-biodegradable as per requirement of the indenter.
22. Each consignment shall accompany with the documents/invoices and manufacturer's test certificates.
23. Installation will be upon bidder as per required by Dhrol Nagarpalika at location.
24. **General Requirement:**
  1. All structural members should be free of joints.
  2. All structure steels such as channels, angles must be of ISI / ISO certified rolling mill.
  3. The bidder has to make all necessary arrangements for inspection as per the demand of the officials of Dhrol Nagarpalika.
  4. Conditional offer will not be accepted and will be treated as non-response.
  5. **Guarantee:** Upon entering into the contract, the supplier will guarantee against technical and manufacturing defects in the material supplied and will replace the defective material provided at his own cost for a period of 18 months from the date of receipt of the material.
  6. **Warranty:** The supplier will give 18 (eighteen) months warranty from the date of supply.
  7. Bidder to require and demand all Xerox copies of the bill and HRC-Prime steel, welding electrodes, anti-corrosive and enamel paints by the officials of Dhrol Nagarpalika.
  8. Preliminary inspection of raw material, sheet, paint, welding rods, channels, flats etc. will be done by the officials of Dhrol Nagarpalika or third party agency before starting the production.
  9. The material used in the manufacturing should be ISI or ISO marked, certified and billed if not all items and ISI / ISO certificate have to be submitted to Dhrol Nagarpalika.
  10. All bid documents including, bid no. to be sent at Dhrol Nagarpalika address. It is mandatory to write the name of the bid and should reach office before Bid date or on Ending date of Bid. If this condition is violated, the bid will be considered invalid and will be considered disqualified and no time limit will be given for any increase

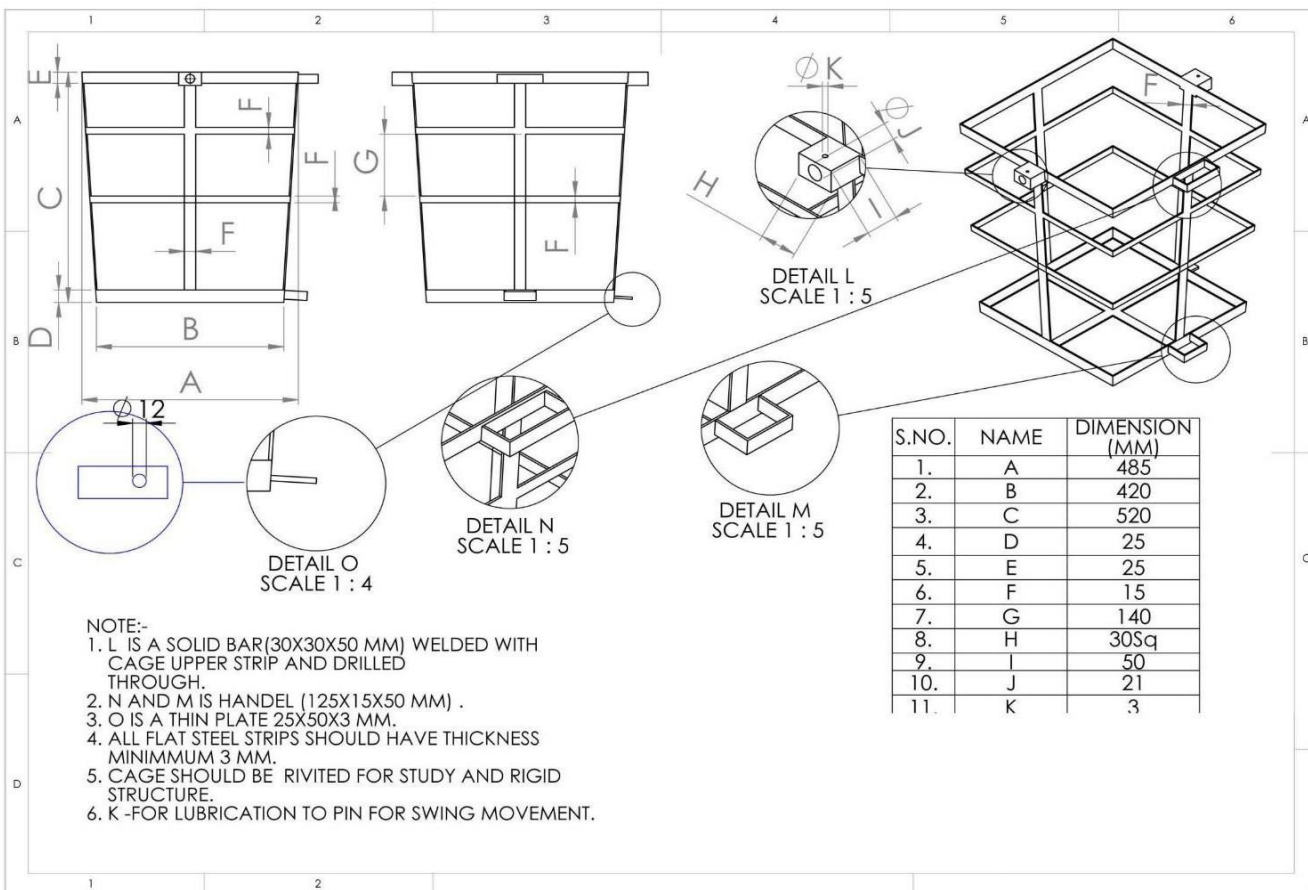
# Drawings

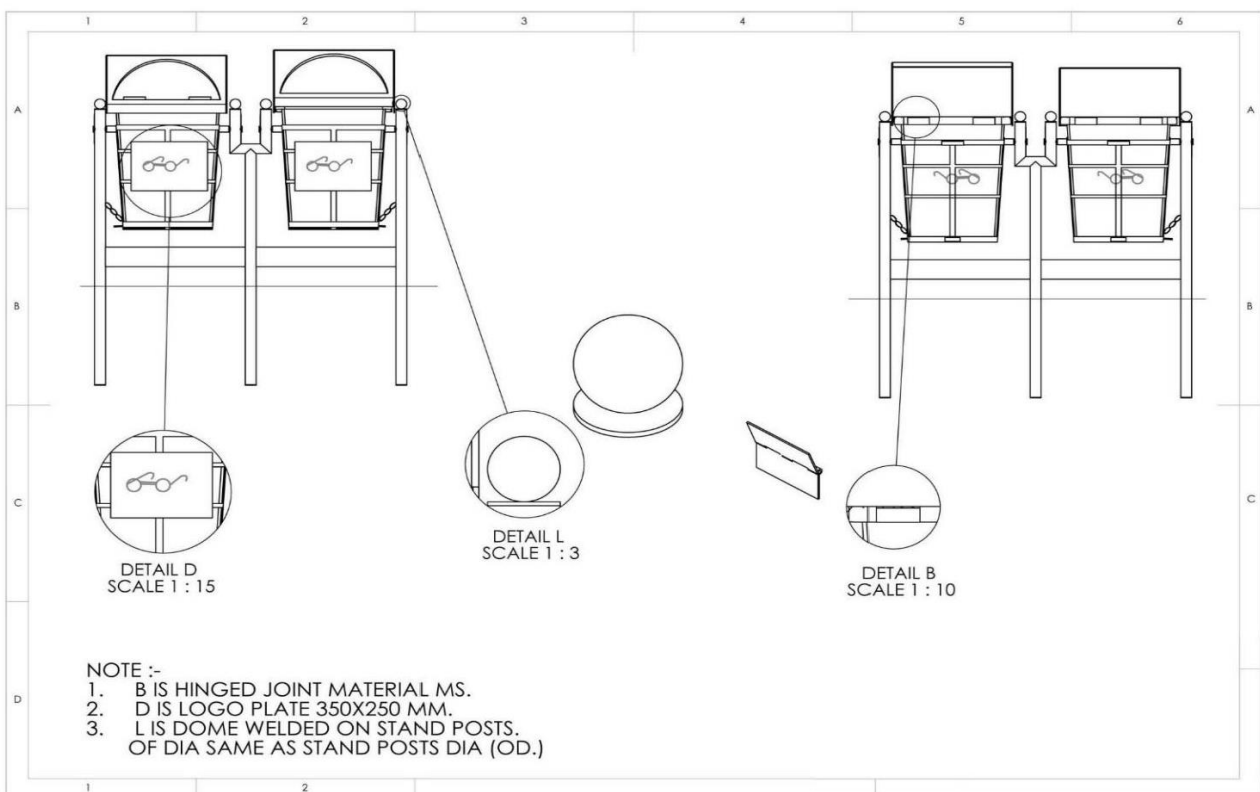
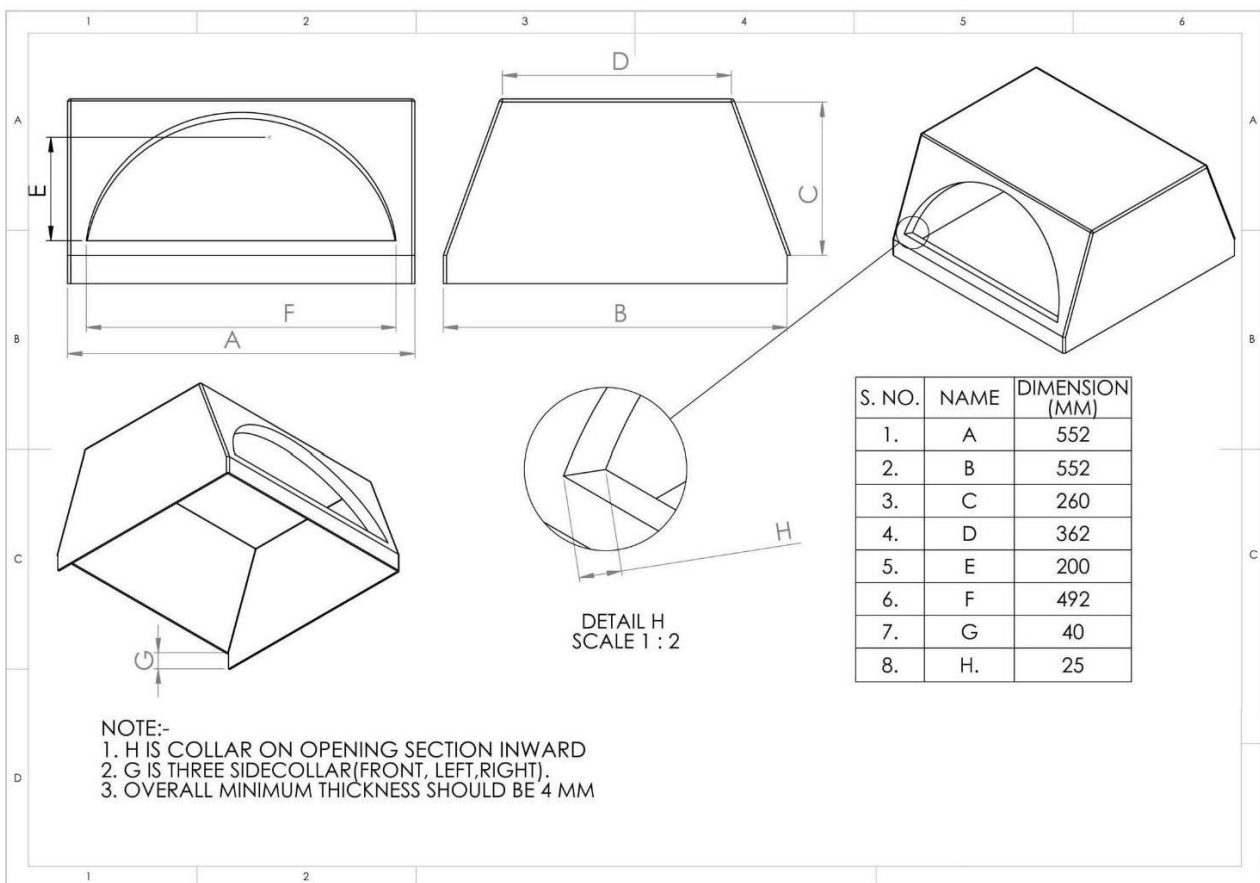


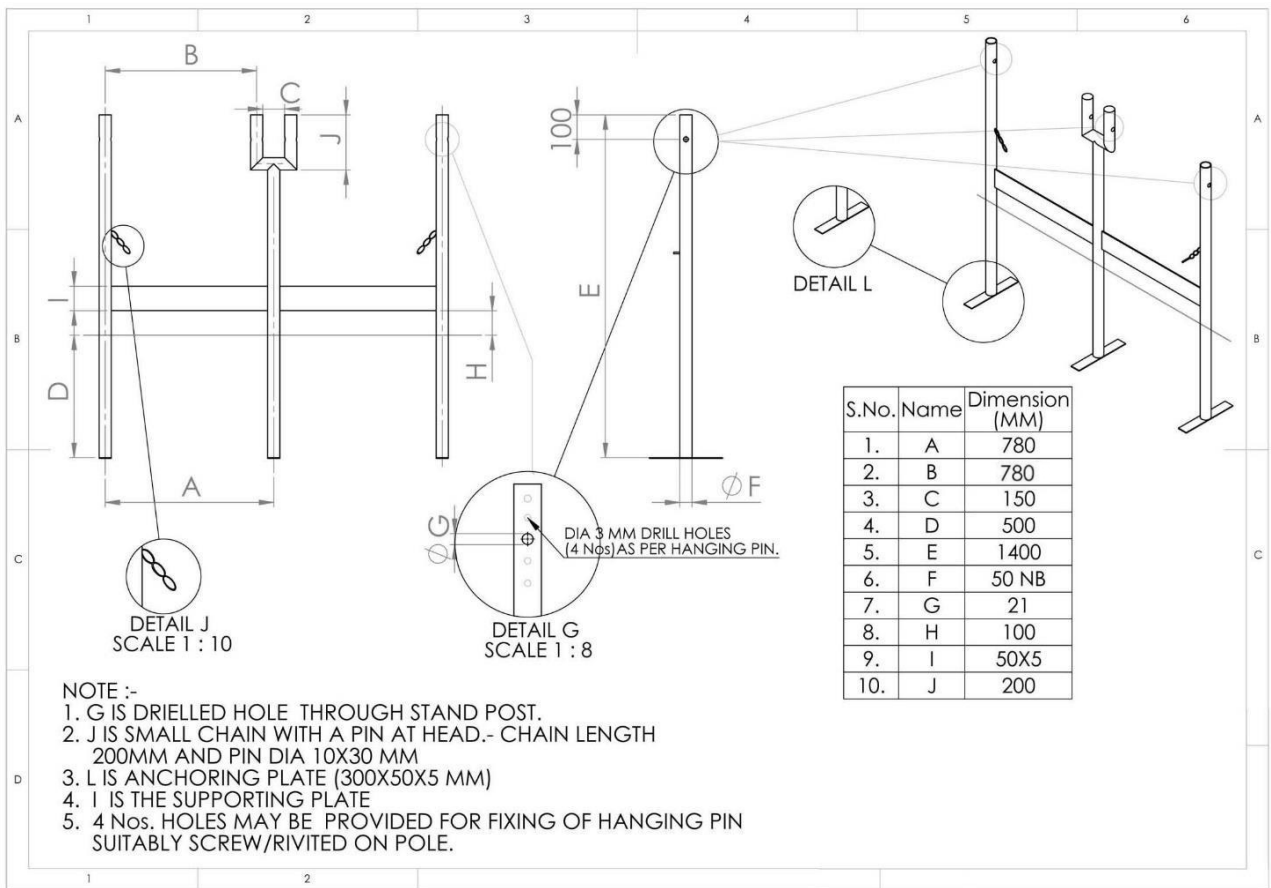
BIN

S. NO.	NAME	DIMENSION (MM) INNER
1.	A	475
2.	B	400
3.	C	620
4.	D	25









Om Consultancy &Engineering